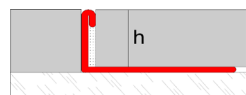


Novosuelo/Novopared Stainless steel



Profile with simple lines made of stainless steel AISI 304 alloy. This profile has been designed to be installed as an edge protector, flooring separator, countertop finish... It can be installed with floor or wall tiles between 8 and 15 mm width. Available in high brightness finish.

General Features



Material:	Stainless steel AISI 304
Lenght:	8ft2in / 2,5 m.l.
Dimensions (h):	5/16", 3/8", 1/2", 9/16"
	8, 10, 12, 15
Packaging:	30 u./box
Finishes:	High brightness

Applications

Novosuelo/Novopared Stainless steel is a profile designed to protect edges of ceramic installations. It can also be installed as a flooring separator or countertop finish among others.

Technical Features and tests



Alloy	AISI-304 Test of chemical composition of each batch		AIMME
Corrosion resistance	Salt spray test + 504 hours without variation + 650 hours without variation (models made of stainless steel covered with titanium)	UNE 112017:92	AIMME

Materials

Stainless Steel

Novosuelo/Novopared stainless steel is a profile made of stainless steel AISI-304. All material batches are tested with the chemical composition test to determine that they fulfill with the specification of the alloy. Stainless steel used in Emac® products has also been tested with salt spray test, exceeding 500 hours of exposition without signs of corrosion.

Stainless steel is a highly durable and resistant material, with an excellent superficial appearance that does not degrade along the time. The finishes available are high brightness, brushed or the "futura" range whose covering contains titanium. All the finishes are slightly porous and smooth, making easier the hygiene of the installation.

*You can find out more information by consulting the Technical Files of materials available in www.emac.es

Installation

Walls



To visualize the video, capture this image with your mobile (QR code reader software is required) or just click on it.

1. Tile one of the sides of the wall to be tiled. Then, spread a big amount of thin-set mortar on the other side.
2. Place the Novosuelo/Novopared on the corner and press to let the thin-set mortar pass through the holes of the anchoring wing. Coloque el Novosuelo/Novopared sobre el ángulo y presione para que el material de agarre pase a través de los agujeros mecanizados del ala de fijación.
3. Place tiles along the anchoring wing and then press them softly to get an optimal adhesion.
4. Continue tiling until the installation is finished
5. Clean the possible leftover and let dry.



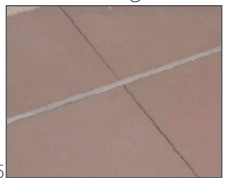
Floors



To visualize the video, capture this image with your mobile (QR code reader software is required) or just click on it.

1. Spread a big amount of thin-set mortar on the surface to be tiled.
2. Then, place the profile and press it to let the thin-set mortar pass through the holes on the anchoring wing.
3. Place a tile on the anchoring wing of the profile and press to get an optimal contact with the thin-set mortar.
4. Repeat the previous step placing tiles along the profile until the installation is finished. Before curing, tap with a rubber hammer to align the profile with the pavement.
5. Finally clean the leftover material and let dry.

** If you are going to polish the flooring, you must install the profile slightly below the tile to avoid possible damages.*



Cleaning and maintenance

It's necessary the immediate cleaning of the material after its installation to avoid that remainings of mortar, concrete or iron particles from wool or tool could cause corrosion.

For outdoor applications, such as facades, the rain is an efficient cleaner. Pay special attention to difficult access areas and be sure you remove all the remainings of dust and the rest of elements. You can do this cleaning once per month.



For indoor applications, you can use water with detergent or liquid soap to remove dirtiness and possible fingerprints marked on the surface. In highly brilliant finishes, you can use a glass cleaner. There are specific cleaners in the markets for stainless steel which clean the material and reduce possible stains. Whenever you clean stainless steel, ensure you rinse it well and dry totally to prevent fogging.

Steel wool or similar products, are not recommended because they could scratch the surface and create pitting corrosion. Pay special attention while using materials containing chlorides, they are not indicated because could oxidize the material. Hydrochloric acid or iron products in a long contact with the material are neither recommended. Do not use cleaners for common steel for the cleaning of stainless steel.

Technical Information

You can find out more information about the technical features of Emac®'s products by downloading their Technical File from www.emac.es.

If you have any query please contact our Technical Department in tecnico@emac.es