



## Novojunta® Pro AL30



Floor/floor. Light/medium loads

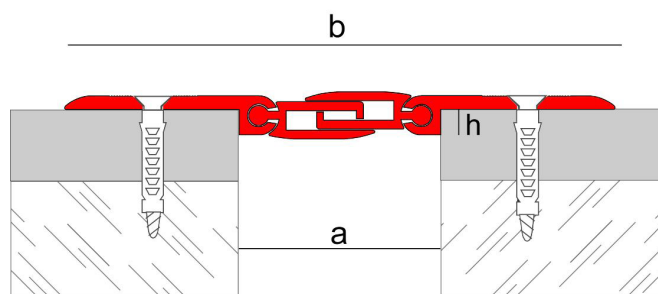
Novojunta® Pro AL30 is an already assembled system of profiles for structural joints, made of anodized aluminium, which allows movements with six degrees of freedom. It has been designed for joint widths 1-3/16" (30 mm.). This product is intended to be installed after the tiling process (in walls or floors). It is delivered assembled and it's easy to install. Available in silver matt color.

### General Features



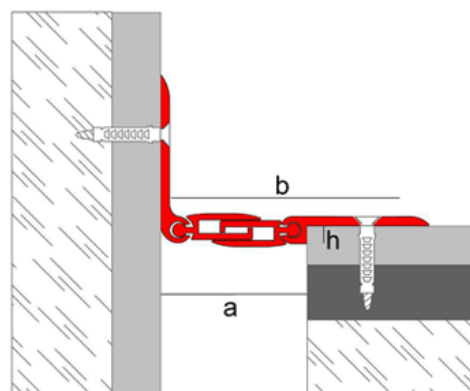
Reg. 1815762-1

Material:	Anodized aluminum
Length:	8ft2in / 2,5 m.l.
Packaging:	12 u./box



Reference	Height (h):	Joint width(a):	Visible width(b):	Horizontal movement:	Vertical movement:
NJPAL30PL25	3,8 mm	30 mm	82 mm	9,4 mm (+/-4,7)	5 mm(+/-2,5)

Novojunta® Pro AL30 has a special perimeter piece available:



Reference	Height (h):	Joint width(a):	Visible width(b):	Horizontal movement:	Vertical movement:
NJPPAL30PL	3,8 mm	32 mm	56 mm	9,4 mm (+/-4,7)	5 mm(+/-2,5)

### Technical Features and tests



Alloy	6063 L-3441	AA and ASTM UNE 39-301-89
Fire resistance	M0 (UNE 23-727-90)	
Abrasion resistance	Very good	
Lightfastness	Excellent	
Appearance and color	EN 12373-1	
Focused linear load (rigid wheel track )	6000 N	AIMME
Focused linear load(pneumatic wheel track)	50000 N (without breaking)	AIMME

### Aplicaciones

The buildings and constructive elements are under strains caused by thermal variations. The installation of expansion joints helps to minimize the effects that these variations cause in the whole building, preventing a possible structural damage.

The **CTE (Spanish Technical Building Code)**, in the DB-SAE (Document about actions in building), states that in steel or concrete buildings is necessary not to let continuous elements longer than forty meters without installing expansion joints.



**Novojunta® Pro AL30** is a solution for expansion joints consisting of aluminum sliding pieces. This profile absorbs stresses and strains caused in constructive elements, preventing this way from cracking or other pathologies. Suitable for its installation in floorings.

Thanks to its design, **Novojunta® Pro AL30** fits perfectly the flooring, being installed in joints up to 30 mm width. This profile is entirely made of anodized aluminum.

### Materials

Aluminum



**Novojunta® Pro AL30** is a profile made by extrusion of aluminum. It has been anodized, improving mainly by this process its corrosion and mechanical resistance and its appearance. The anodized applied, has the quality seal "Qualanod" which guarantees the quality of the process and the resulting profiles. This seal regulates several tests: appearance and color, thickness measurements, sealing and impregnation control, abrasion resistance, lightfastness, acetic saline chamber and nitric acid immersion.

Aluminum is a material with excellent chemical, physical and mechanical properties. It is lightweight, tough, ductile, malleable and highly durable.

### Traffic loads



Novojunta® Pro AL30 can support light and medium loads, which means that allows pedestrian and vehicular traffic. Allows the traffic of vehicles with pneumatic wheels (DIN 1072) up to 35 kN and the occasional traffic of heavy loads with pneumatic wheel.

### Installation

Novojunta® Pro AL30, in the same way that the range of Novojuntas Pro® from Emac®, it is delivered already assembled and its installation is very easy. It has been designed for joint widths 1-3/16" (30 mm.)

Follow these steps to install successfully the profile:

1. Clean weall the surfaces where the Novojunta® Pro AL30 is going to be installed.

2. Place the Novojunta® Pro AL30 as you have received it in the joint hollow.

3. Remove the protective film and slide the lateral pieces, which will serve to support the profile, until they stop in the edge of the hollow.

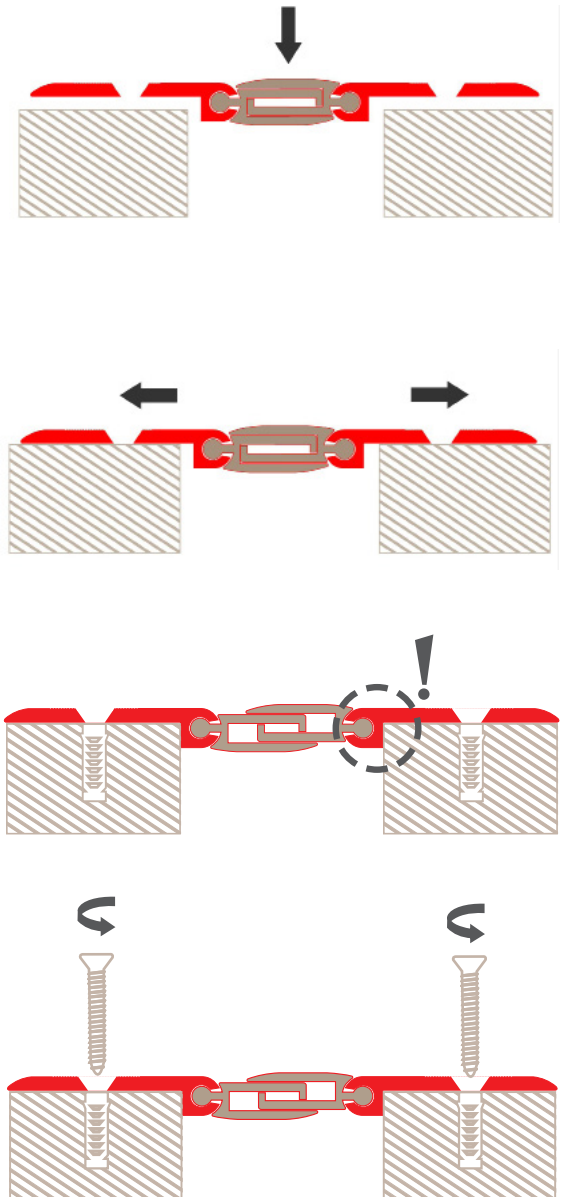
Be sure that both sides stop in the edge of the hollow, that you use the recommended joint width and that the holes are correctly aligned.

4. Make the holes for the fastening screws each 500 mm. so that they match perfectly with the holes on the anchoring wing of the profile. Then, insert the wall plugs in the holes.

5. Install the fastening screws under the recommendations of the manufacturer. It is recommended to use a wall plug type **Fischer SX 4x20 or similar with a DIN7982 n.4 screw.**

The fastening screws recommended have been dimensioned according to the efforts that the joint will have to support during its utile life. It you choose to use alternative fastening screws , please take this into account.

The necessary joint width for an optimal performance is 1-3/16" (30 mm.). If you install this profile in a hollow with higher or lower widths, you should take into account that its allowed movement will vary depending on the joint width where the profile is installed.



### Cleaning and maintenance

The cleaning must be done periodically with a soft cloth. If you use a neutral liquid cleaner, you must rinse the profile with cold water and dry to remove excess moisture. If dirtiness persists, clean the profile with a solution with clean water and detergent or neutral soap 5%, brushing with a cloth that has no particles that could scratch the finish. Outdoors, rainfall will clean the profile.

The cleaning must be done periodically with a soft cloth. If you use a neutral liquid cleaner, you must rinse the profile with cold water and dry to remove excess moisture. If dirtiness persists, clean the profile with a solution with clean water and detergent or neutral soap 5%, brushing with a cloth that has no particles that could scratch the finish. Outdoors, rainfall will clean the profile.

### Technical information

You can find out more information about the technical features of Emac®'s products by downloading its Technical File in [www.emac.es](http://www.emac.es).

If you have any query, please contact our Technical Department in [tecnico@emac.es](mailto:tecnico@emac.es).

Emac Complementos, S.L. reserves the right to make at any time modifications to the geometry profile or the specifications of his products.

