



\*Promotional atmosphere created using Novorodapie Eclipse SP Aluminium, showing a suggestion for one possible use of this product. EMAC does not manufacture, sell or supply any LED strip whatsoever with the Novorodapie Eclipse product. The choice of LED strip should be undertaken by the installer, taking into account the circumstances of the installation site.

**EMAC**<sup>®</sup>  
THE FINAL TOUCH

[en.emac.es](http://en.emac.es)

[www.emac-america.com](http://www.emac-america.com)

**Technic & Decorative profiles**

**Expansion Joints**

**Accessibility & Safety**

**Technical Entrance Mats**

# REASONS FOR CHOOSING



- 1** Immediate service and from one unit, more than 5.000 references stocked.
- 2** Exclusively designed products realized by our own R & D department with rapid prototyping. More than 120 references protected by the Patent and Trademark Office.
- 3** Highest quality materials, guaranteed with tests carried out by independent technological institutes.
- 4** Solutions for all kinds of materials: aluminium, stainless Steel, pvc, brass, vegetable fibers, methacrylate, wood...
- 5** Hundreds of finishes and colours for all kinds of projects.
- 6** Profiles for all thickness and indoor / outdoor applications.
- 7** Solutions to install during and after construction works.
- 8** With subsidiaries in the United States and Italy and present in more than 110 countries.
- 9** Excellent technical support before, during and even after projects are complete.
- 10** Delivery of material on site
- 11** Technical formation for customers and prescribers
- 12** Trades that already trust in EMAC®: McDonalds, Carrefour, Alcampo, Mercadona, Leroy Merlin, Lidl, Burguer King, Primark, El Corte Inglés...

## Technic & Decorative profiles

### Corner & Decorative solutions

emac.es/en  
www.emac-america.com



Novosuelo ASTRA® Kombu



Novolistel® MaxiSahara



Novocanto® Maxi



Novolistel® 3, aluminium bright black



Novopared, aluminium matt silver



Novocanto®, aluminium matt silver



Novopilastra® 12/15, aluminium white



Novolistel® slimm, aluminium matt silver



Novolistel® 3 XS, aluminium matt silver



Novoescuadra MINI, aluminium white



Novopilastra® 8/10, aluminium matt black

### Divider flooring solutions



Novonivel® Access, aluminium matt silver



Novosepara® 1, aluminium matt silver



Novosepara® 4, aluminium matt black



Novosuelo, aluminium champagne

Stair Nosing solutions. Maximum security and aesthetics.

emac.es/en  
www.emac-america.com



Novopeldaño ASTRA® Nori



Novopeldaño® MaxiSoho Dakar



Novopeldaño® MaxiDakar



Novopeldaño® 4 +cover, aluminium matt silver



Novopeldaño Eclipse®, aluminium matt silver



Novopeldaño Eclipse® Aura, aluminium matt black

Skirtings for all kinds of projects

www.emac.es



Novorodapié Eclipse®, aluminium matt black



Novorotri Eclipse®, 3 uses in 1



Novorodapié® Rehabit, aluminium matt silver



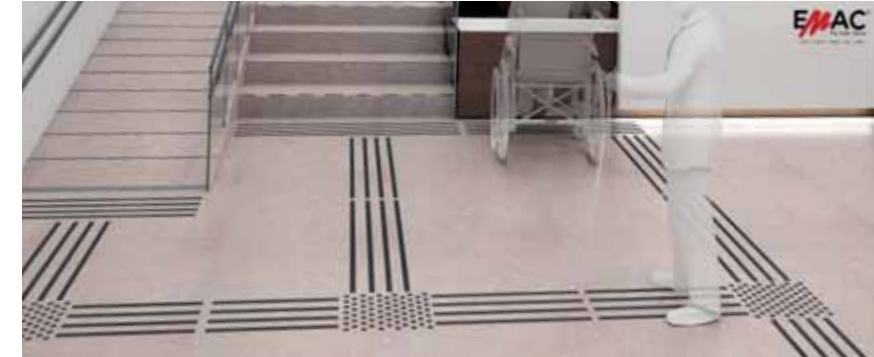
Novorodapié® L, aluminium matt black



Novorodapié® Semiflex, white PVC

Accessibility & Safety Solutions

Universal Accessibility & Safety Guide



ASU System



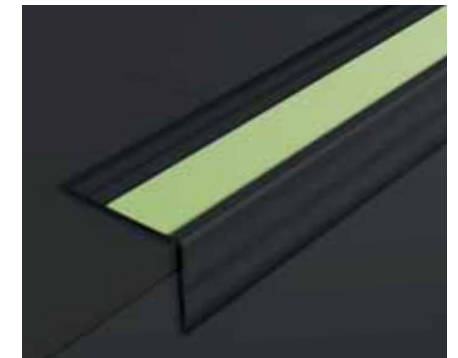
Novopeldaño® Safety, black



Novotop Access Aluminium, black



Novoband Access



Novopeldaño® Lumina, photoluminiscent



Novopletina® Safety, yellow



Novostrip SP, aluminium champagne

Technical Entrance Mats

Technical Entrance Mats Guide



Novomat® with Custom Nameplate

\*Promotional atmosphere created using Eclipse® collection, showing a suggestion for one possible use of this product. EMAC® does not manufacture, sell or supply any LED strip whatsoever with the Eclipse® collection. The choice of LED strip should be undertaken by the installer, taking into account the circumstances of the installation site.



Outdoor Solutions: Facades, Terraces & Swimming pools

emac.es/en  
www.emac-america.com



Novovierteaguas SP System, RedDot Winner 2022



Novocover® Maxi



Novovierteaguas LX, light grey aluminium



Novovierteaguas GT, oxidized grey



Novosepara fix®, high brightness steel

Sanitary & Health solutions



Sanitary & Health Technical Guide



Novoescocia® 4, aluminium matt silver



Novoescocia® 4 mini, antibact. aluminium



Novoescocia® S, aluminium white



Novoescocia® 4, white PVC



Novoescocia® methacrylate

emac.es/en  
www.emac-america.com

Expansion & Structural joints, Joints cover, Firestop cords...

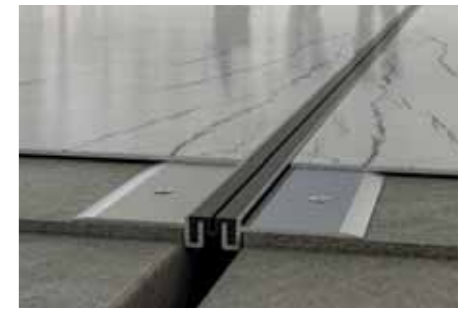
Structural Joints System Technical Guide



Structural Joints System: Novojunta® Pro Metal 60 + Novomembrana EPDM + Firestop cords



Novojunta® Metallic Flex



Novojunta® Pro Basic SLiMM



Novojunta® Pro Metal 30



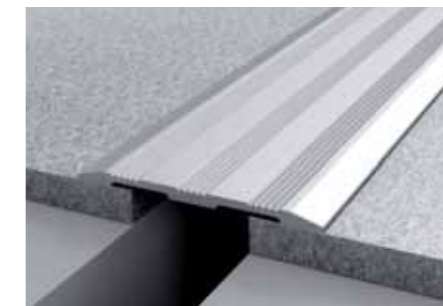
Novojunta® Pro Aluminium Plus



Novojunta® Pro Metal 50 + Firestop cords



Novojunta® Pro AL30



Novotapajuntas GTA



Novojunta® Pro SP 50



Novojunta® Metallic



Novojunta ASTRA® Maui



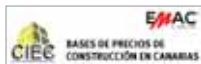
Novojunta ASTRA®

EMAC® is a leading company in profiles and trims for wall and floor tiles, and structural joints and expansion joints for large projects. We offer more than 3.000 references in stock and excellent service, with solutions for floors, walls, facades and urban pavements. We are present in over 110 countries with subsidiaries in USA and Italy.

**PROJECTS**

In the last 20 years, hundreds of projects worldwide have chosen our profiles for resolving their structural joint challenges. We present a few of them here:

Dublin Airport (Ireland), United Nations Communications Centre in Valencia (Spain), Algarve Race Circuit (Portugal), King Juan Carlos I University in Madrid (España), “La Aurora” Airport (Guatemala), Ikea shopping center in A Coruña (Spain), Jumeirah Beach Residence in Dubai (United Arab Emirates), Kitchens of University Hospital of Getafe (Spain), Ágora Building in City os Arts and Sciences of Valencia (Spain).



**Technical and Decorative Profiles | Expansion Joints**

**Technical Entrance Mats | Universal Accessibility & Safety**



EMAC® Group

Building Division - EMAC®:

Valencia, España [www.emac.es](http://www.emac.es) | [info@emac.es](mailto:info@emac.es) | Tel. (+34) 961 532 200  
 Miami, Florida [www.emac-america.com](http://www.emac-america.com) | [info@emac-america.com](mailto:info@emac-america.com) | Phone: # (305) 406 1593  
 Sassuolo (Mo), Italia [www.emac-italia.it](http://www.emac-italia.it) | [info@emac-italia.it](mailto:info@emac-italia.it) | Tel. (+39) 0536994854

