

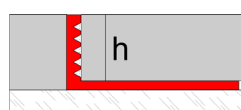


Novosuelo/Novopared Aluminium



Profile with simple lines made of aluminium, intended to be installed as an edge protector, flooring separator, countertop finish... It can be installed with floor or wall tiles between 4,5 and 30 mm width. Available in lacquered and anodized trendy finishes or in natural finish.

General Features



Material:	Aluminum
Length:	8ft2in / 2,5 m.l.
Dimensions (h):	3/16", 1/4", 5/16", 3/8", 1/2", 9/16", 11/16", 3/4", 7/8", 1", 1'3/16"
	4'5, 6, 8, 10, 12'5, 15, 17'5, 20, 22'5, 25, 30 mm*
Packaging:	50 u/box
Finishes:	Anodized/lacquered/natural aluminium
	*Check available finishes according to height

Applications

Novosuelo/Novopared Aluminium is a profile designed to protect edges of ceramic installations. It can also be installed as a flooring separator or countertop finish among others.

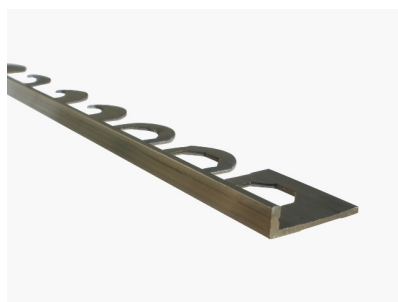
Technical Features and tests

Alloy:	6063 (AA y ASTM) L-3441 (UNE 38-301-89)
Fire resistance:	M0 (UNE 23-727-90)
Abrasion resistance:	High
Lightfastness:	Excellent
Appearance and color:	EN 12373-1

Special Applications

Novosuelo/Novopared Aluminium is available in bendable option with an increase in the sale Price. A special die cutting on the fixing wing of the profile is made and reduces the amount of material and facilitate it can be bendable.

Novosuelo aluminium bendable is available in some finishes and models under request.



Materials

Aluminium

Novosuelo/novopared aluminium is a profile made by extrusion of aluminum. Anodizing improves the corrosion resistance, mechanical resistance and appearance of profiles. It has the quality seal Qualanod, which guarantees the quality of the process and the resulting profiles. This seal regulates several tests: appearance and color, thickness measurements, sealing and impregnation control, abrasion resistance, lightfastness, acetic saline chamber and nitric acid immersion.

The lacquered finishes have a high quality and homogeneous surface. The lacquering has the quality seal Qualicoat, which guarantees the quality of the process and the final products.

The natural finish has no surface treatment so is less resistant to corrosion and scratching. It is not recommended installing natural finishes without the application of an additional protection.

Aluminum has excellent chemical, physical and mechanical properties. It is lightweight, tough, ductile, malleable and highly durable

Installation

Walls



To visualize the video, capture this image with your mobile (QR code reader software is required) or just click on it.

1. Tile one of the sides of the wall to be tiled. Then, spread a big amount of thin-set mortar on the other side.
2. Place the Novosuelo/Novopared on the corner and press to let the thin-set mortar pass through the holes of the anchoring wing. Coloque el Novosuelo/Novopared sobre el ángulo y presione para que el material de agarre pase a través de los agujeros mecanizados del ala de fijación.
3. Place tiles along the anchoring wing and then press them softly to get an optimal adhesion.
4. Continue tiling until the installation is finished
5. Clean the possible leftover and let dry.



1



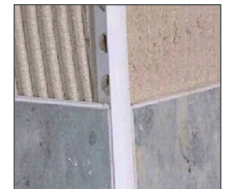
2



3



4



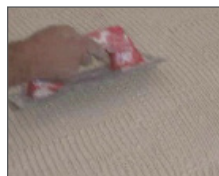
5

Floors



To visualize the video, capture this image with your mobile (QR code reader software is required) or just click on it.

1. Spread a big amount of thin-set mortar on the surface to be tiled.
2. Then, place the profile and press it to let the thin-set mortar pass through the holes on the anchoring wing.
3. Place a tile on the anchoring wing of the profile and press to get an optimal contact with the thin-set mortar.
4. Repeat the previous step placing tiles along the profile until the installation is finished. Before curing, tap with a rubber hammer to align the profile with the pavement.
5. Finally clean the leftover material and let dry.
6. * If you are going to polish the flooring, you must install the profile slightly below the tile to avoid possible damages.



1



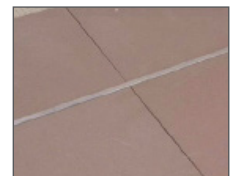
2



3



4



5

Cleaning and maintenance

The product must be cleaned periodically with a soft cloth. If you use a neutral liquid cleaner, you must rinse the profile with cold water and dry it to remove the humidity excess. The persistent dirtiness can be removed by using cleaning approved agents lightly abrasive or a grid covered with polished powder neutral.

Steel wool, abrasive cleaners, souring products as well as strong acids (hydrochloric and perchloric), strong bases (caustic soda or ammonia) or carbonated solutions are not recommended. Citric acid is neither recommended because it dissolves the protective layer of the surface of aluminium. Waxes, petrolatum, lanolin or similar substances are not appropriate. Solvents containing haloalkanes (hydrofluoroether and chlorinated solvents) and curing accelerators containing chlorides should not be used (use special accelerators free of chlorides).

Technical Information

You can find out more information about the technical features of Emac®'s products by downloading their Technical File from www.emac.es.

If you have any query please contact our Technical Department in tecnico@emac.es



Indoors



Wall tiling



Flooring

Emac Complementos S.L. (Spain) info@emac.es // Emac America L.L.C. (FL,USA) sales@emac.es // Emac Italia S.R.L. (Italy) info@emac-italia.it
www.emac.es

*The data provided are only for information and have been obtained by our supplier or Emac®.
Does not constitute legal guarantee in terms of properties and / or functionality of the application of material*